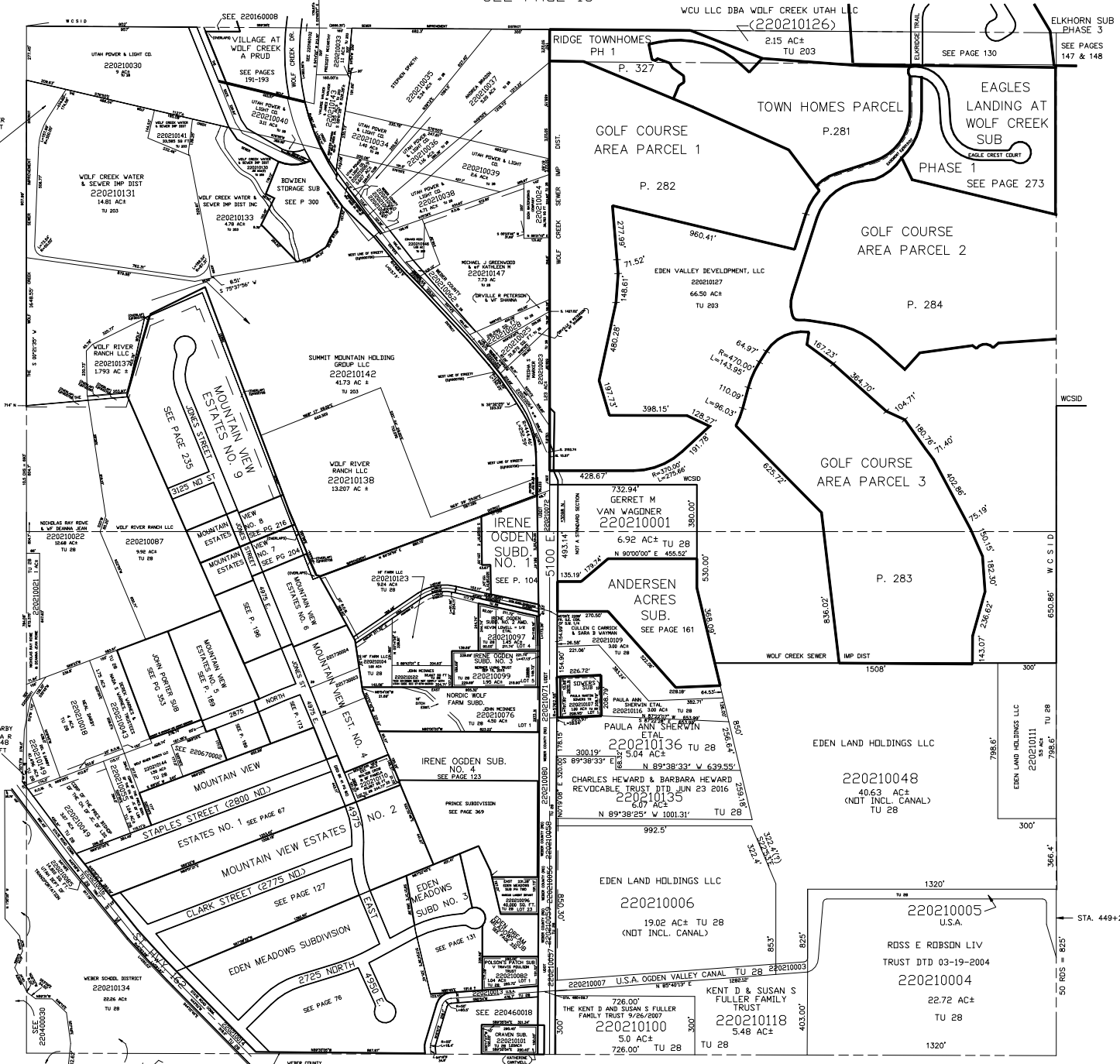


SECTION 27, T.7N., R.1E., S.L.B. & M.  
IN WEBER COUNTY  
SCALE 1" = 400'

TAXING UNIT: 28, 203

SEE PAGE 16

ELKHORN SUB PH 2  
LOTS 24 TO 28 AMENDED



SEE PAGE 22

SEE PAGE 20

SEE PAGE 46

SEE PAGE 45

NOTE: THIS SECTION IS NOT A STANDARD

\*ADDRESS AFFIDAVIT E#2880193